



TECHNOLOGICAL EDUCATIONAL INSTITUTE OF CRETE <http://www.teicrete.gr>

⋮

⋮ \_\_\_\_\_  
\_\_\_\_\_  
\_\_\_\_\_  
\_\_\_\_\_



. . . 4697

2011-2012

**ó**

6

**1o :**

7

**ó**

10

**1.1**

**Vs**

14

**1.2**

16

**1.3**

19

**2o :**

**2.1**

23

**2.2**

28

**2.3**

30

**2.4**

37

**2.5**

38

**3o :**

**3.1**

-

41



( , , ,  
... )

1°:

,  
( , , ,  
, )

,  
,  
,  
)  
)  
)  
,  
:

( , , ,  
... )

( , . .)

( . :2002).



(city breaks)

(alternative tourism),

É  
É  
É  
É  
É

( , 2005, .  
)

1960



:

É , ,  
( . . . . . )

É  
.  
.

É ,  
. ( . . . )

É  
( . . . . . )  
.  
.  
:

É , ,  
.  
.  
.

É , ,  
6 ,  
.

### 1.3

ó

« »

2 :

(2000)

(15-30 ), short breaks (1-4 ),

...)

(...),  
(...)

« »

⋮

## 2.1

1960,

ó



Ø

(

ó

Leader

Leader+,

:

É ( )

É ( )

É ( )

É

É

,

.

.

,

,

,

,

(

).

,

7-8%

,

16% ( , 2000).

,

,

,

.

.

,

,

,

.

,

,

.

,

.

.





TRAVELDAILYNEWS

...

12/01/09

: Ø

ó

1)

6)

/

, ,

ó

ó

.

.

-

:

-

:

1)

,

,

.

2)

,

,

3)

,

,

,

,

.

2

3

-

ó

ó

.

, ,

,

«

»

,

,

,

,

.

,

,

«

»

,

,

2.4

« »

( . ).

5-15 ,

4 GR,

1,8

2004,

1

10%

( )

16



29%

50%".

3 :

3.1 -

2000

160

## 3.2

,

,

,

.

.

,

,

.

« »

.

,

,

,

.

,

,

,

,

,

,

,

.

,

.

:

É

16-18 C.

ó

17-19 C

HOTEL A

120

, 22

ó

63

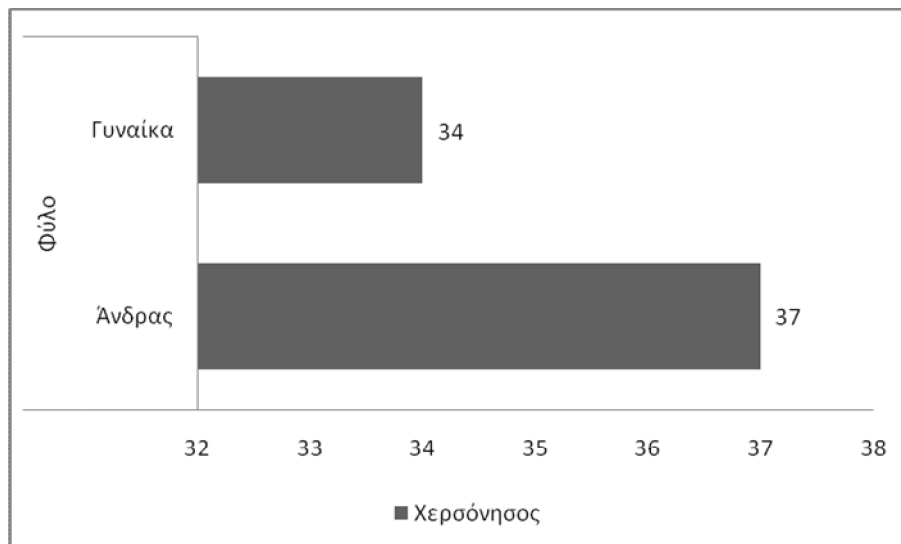
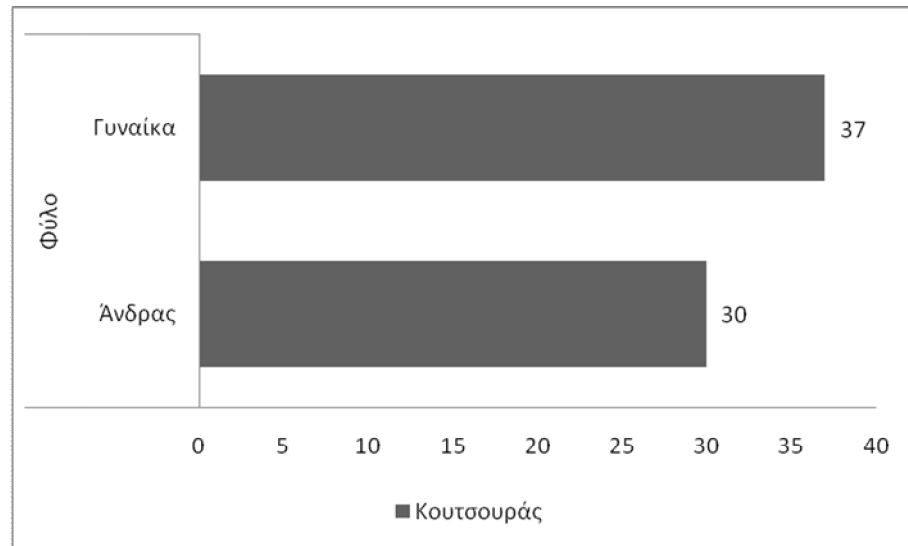
ó

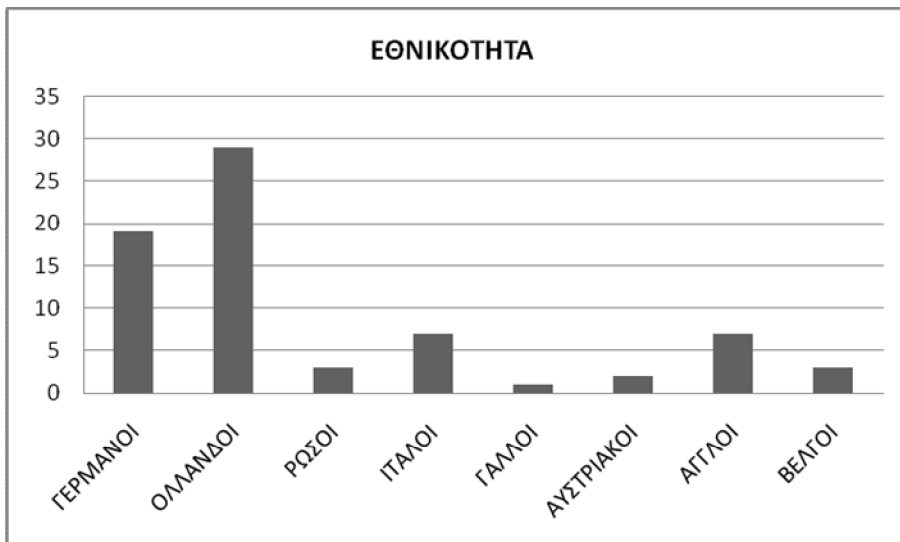
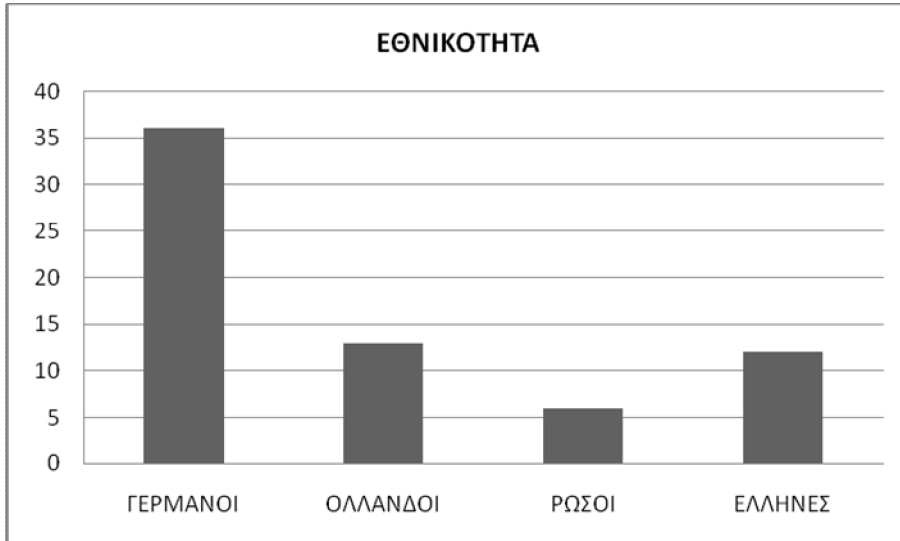
ó

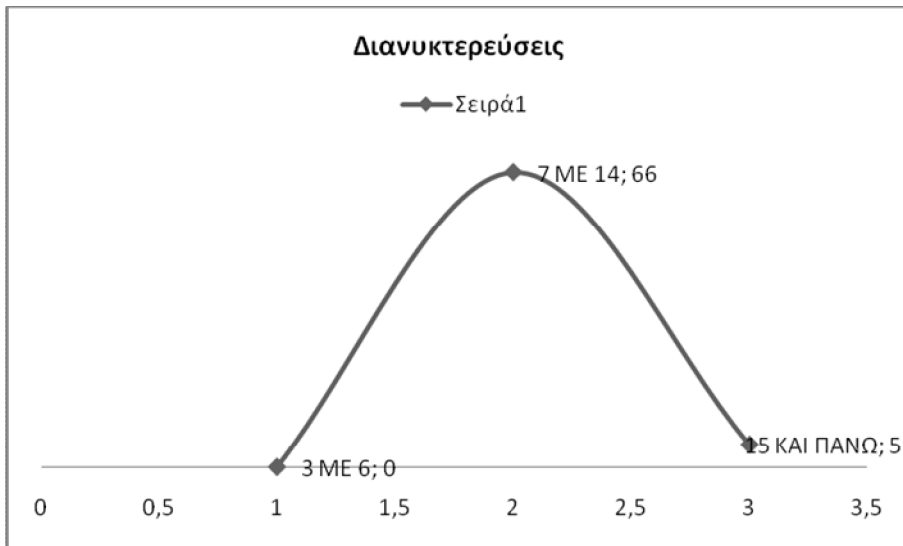
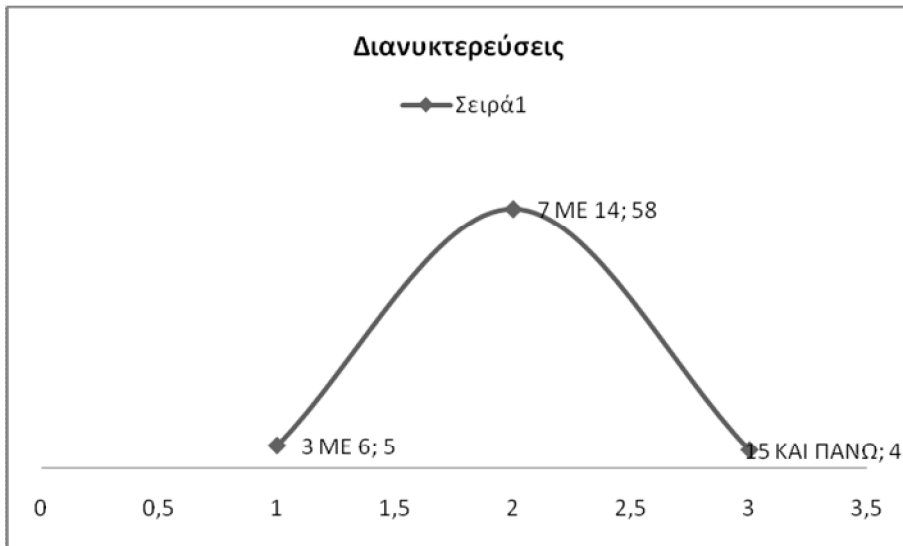


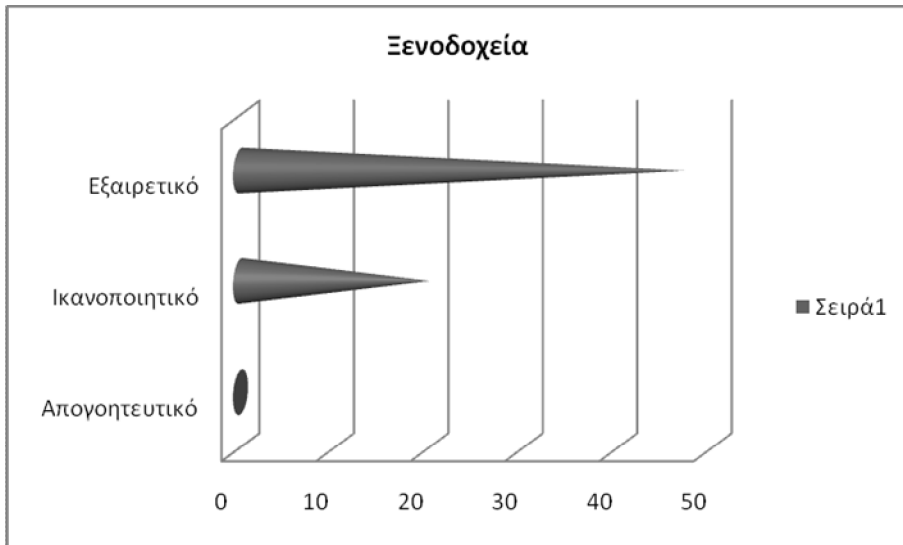
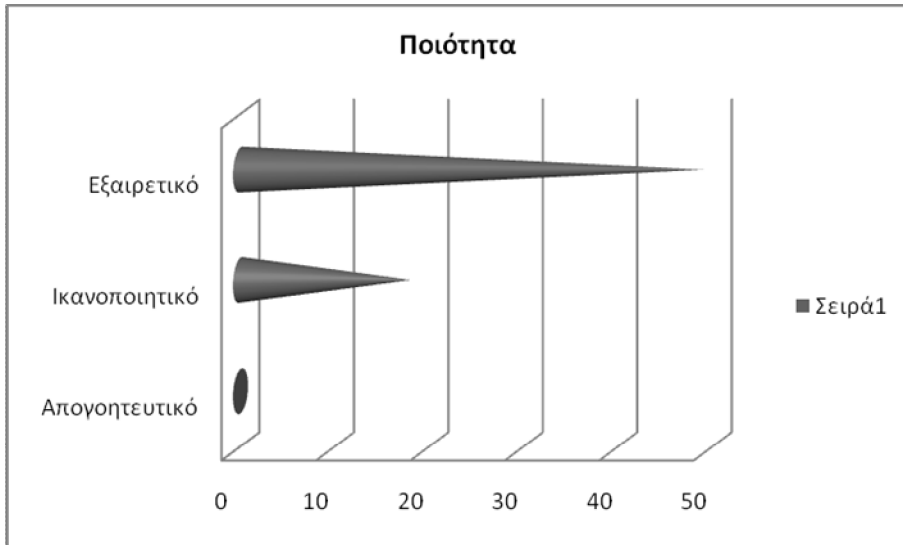
150      ó 8      -, bar, snack bar, ala  
carte restaurant, mini market      .      ,  
      ,      ,      service  
      4      ,      ,      ,  
      .  
      .      ,      ,      ,  
      ,      ,      ,  
      ó      (high season),  
      18-30.

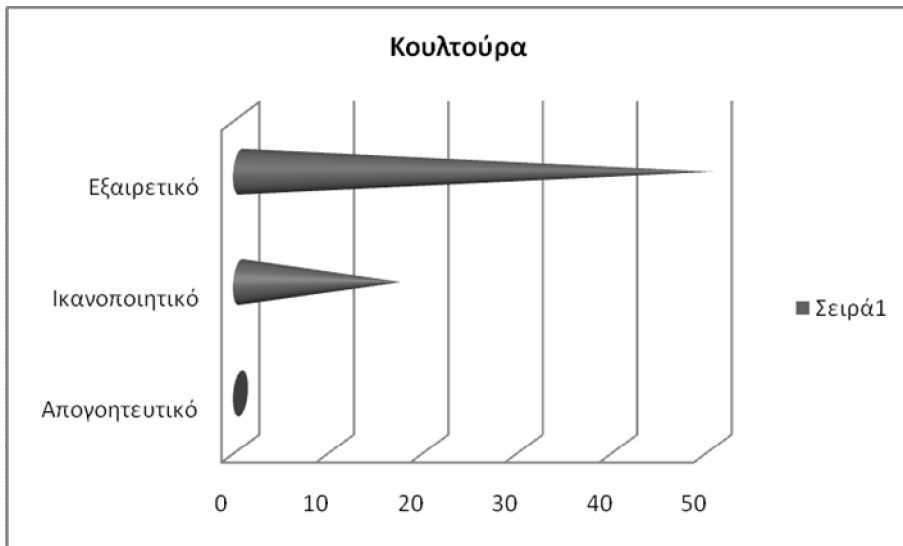
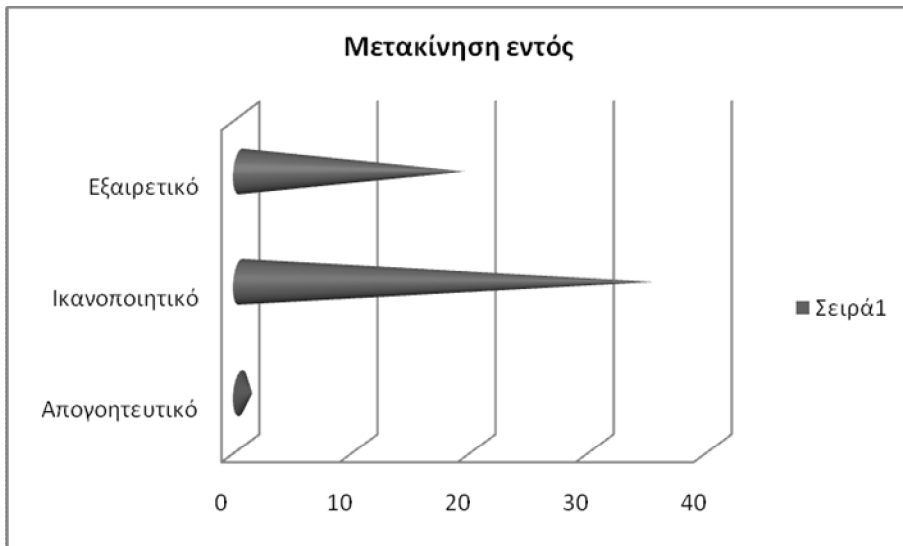
## 4.2

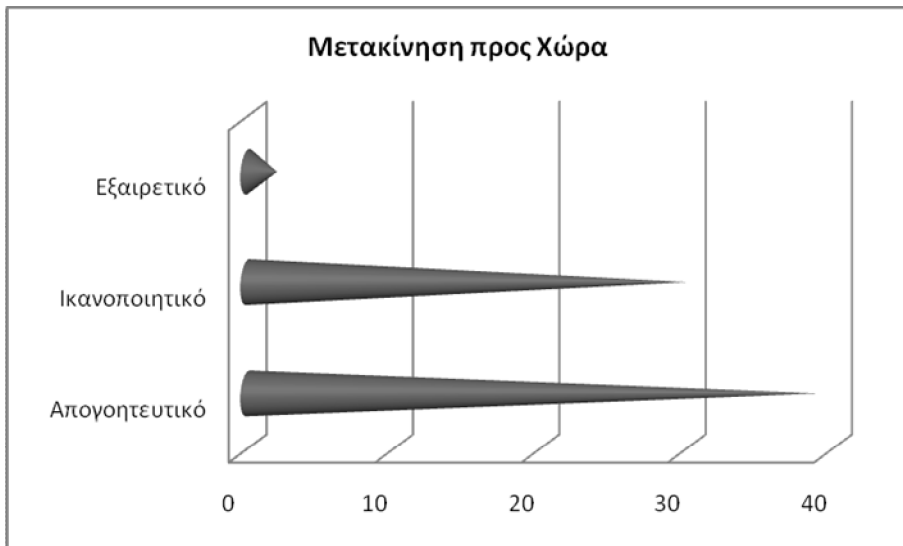
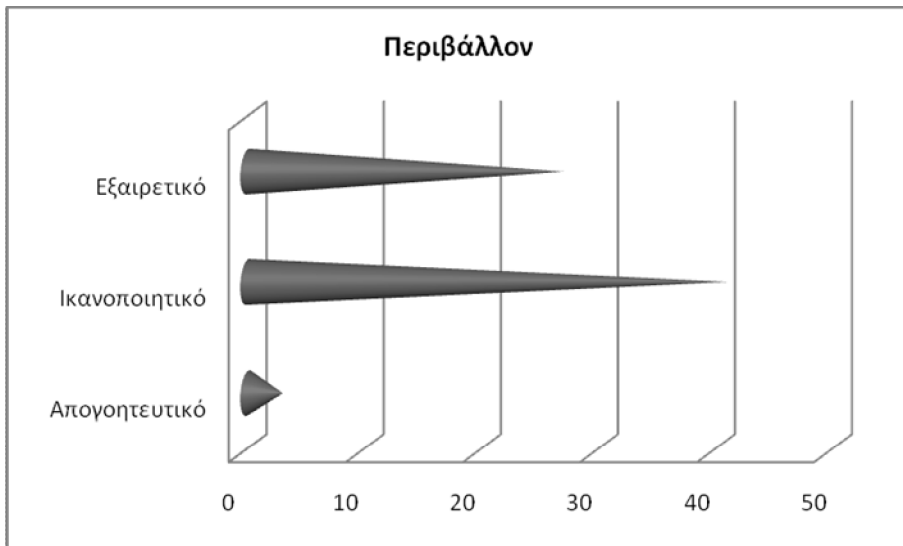


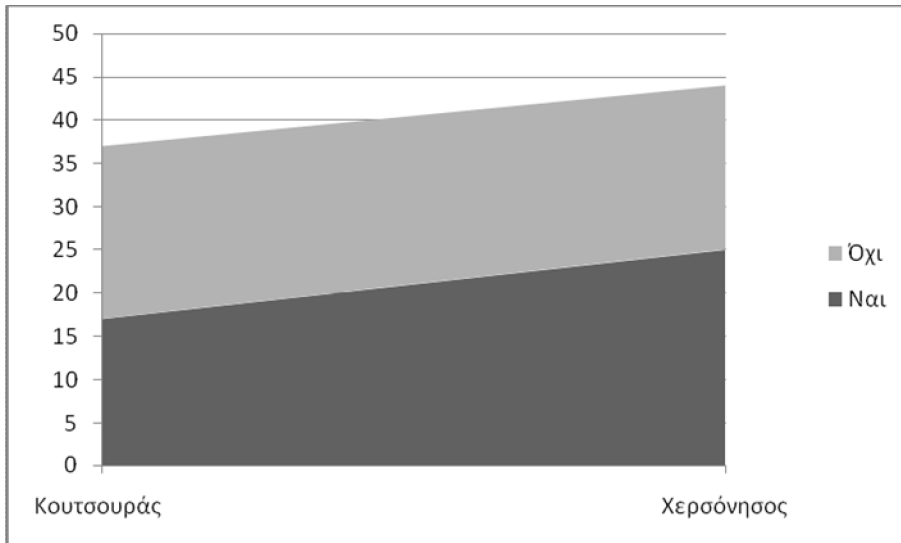
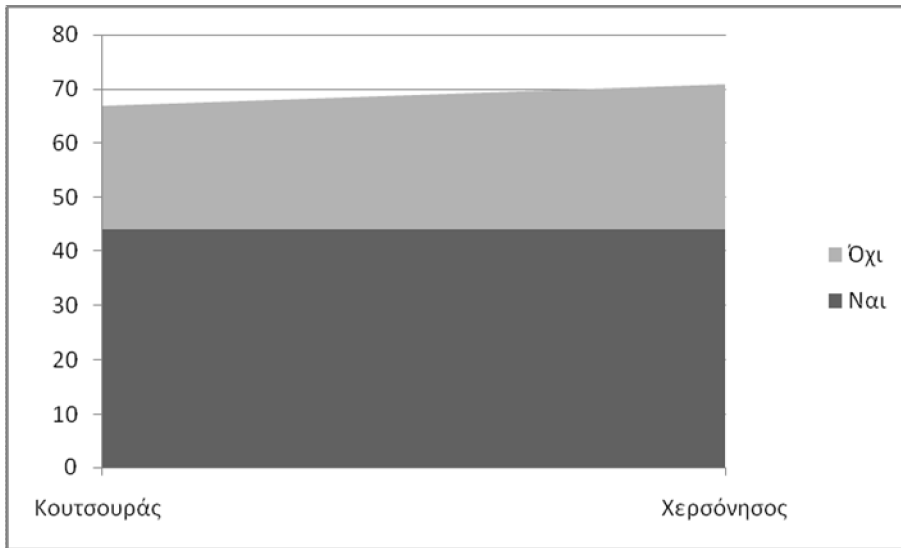














### 4.3

É , ,  
17-27 41 ,  
10.  
É 28-37 18 ,  
26.  
:  
É : 60 , 49  
É : 44 , 39  
É : 30 , 16  
É / : 3, 3





5 :

5.1





.. « :  
 : & », ANUBIS, « , 1996  
 .. « :  
 », « ANUBIS, , 1996 : &  
 . & ., « :  
 », , , 2004  
 .. «Package Tour: »,  
 , , 2000  
 .. « Marketing», Interbooks, , 1998  
 .. « :  
 « , 2006 »: & », NUBIS,  
 , 2000 .. « », « »,  
 .. « , , :  
 », , , 1996  
 ó 2008 , « », 10, . 33-38 & 47-51,  
 2007 , « », 198, . 34-50,

<http://www.eot.gr>  
<http://www.ecocrete.gr>  
<http://www.traveldailynews.gr>  
<http://www.rethymno.gr>  
<http://www.minipress.gr>

## QUESTIONS

Gender:

Male

Female

Age: ò ò ò ò ò ò ò ò ò .

Nationality: ò ò ò ò ò ò ò ò ò ò ..

Traveling with (family, friends, couple, alone, other) ò ò ò ò ò ò ò ò ò .

Destination: ò ò ò ò ò ò ò ò ò ò ..

Duration of stay: ò ò ò ò ò .. days

1. What is the purpose of your visit to Crete?  
You can choose more than one of the below.

Recreation / Rest

Fun, night life

Meeting people

Culture

Sea, Sun, Sand (3S)

Health Reasons

Business Reasons

Other ò ò ò ò ò ò ò



6. If no, would you choose:

The same tourism package type ?

An alternative tourism package type ?

7. Which of the following alternative tourism types would attract you to Crete ?  
Please select up to 2 types.

Agrotourism

Winter Tourism

Cultural Tourism

Religion Tourism

Business Tourism

Other ã ã ã ã ã ã ã ã ã